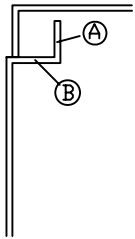


STANDARD TOOLBOX LIPS

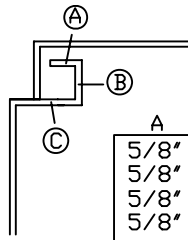
8 LIP



A	B	Gauge
5/8"	7/8"	16 ga
5/8"	7/8"	14 ga
5/8"	7/8"	12 ga
5/8"	7/8"	10 ga

Notes: Simple, cost effective lip design
measures listed are minimum bends
No hinge side details are required
Lid lips are usually 1" deep

11 LIP

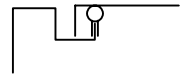


A	B	C	Gauge
5/8"	7/8"	1 3/8"	16 ga
5/8"	7/8"	1 3/8"	14 ga
5/8"	7/8"	1 3/8"	12 ga
5/8"	7/8"	1 3/8"	10 ga

Notes: Measures listed are typical
No Hinge side details are req'd
Good for rain/weather concerns
Lip ID for door usually 1 1/8"

Typical Weather Strip styles

9 LIP

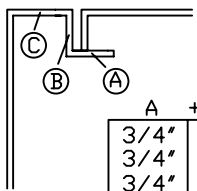


6 LIP



Notes: These styles for illustration only
only, customer may use alternate
styles

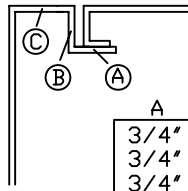
6 LIP



A	B	C	Gauge
3/4"	1"	1"	16 ga
3/4"	1"	1"	14 ga
3/4"	1"	1"	12 ga
3/4"	1"	1"	10 ga

Notes: Inset door - Typically for toolboxes
with door(s) in their sides (vertical)
and/or for boxes used indoors
Door lips typically 15/16" id

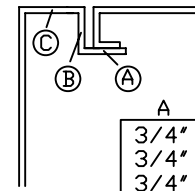
6 LIP (w/ return lip door)



A	B	C	Gauge
3/4"	1 1/8"	1 1/8"	16 ga
3/4"	1 1/8"	1 1/8"	14 ga
3/4"	1 1/8"	1 1/8"	12 ga
3/4"	1 1/8"	1 1/8"	10 ga

Notes: No hinge side req'd
Lip ID for door 7/8" with 5/8" return
For boxes NOT using weather strip,
but requiring solid door and seal

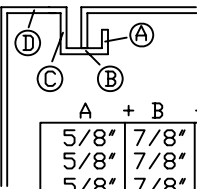
6 LIP (w/ weather strip)



A	B	C	Gauge
3/4"	1 3/8"	1 1/4"	16 ga
3/4"	1 3/8"	1 1/4"	14 ga
3/4"	1 3/8"	1 1/4"	12 ga
3/4"	1 3/8"	1 1/4"	10 ga

Notes: No hinge side req'd
Lip ID for door 7/8" with 5/8" return
Typically no weatherstripping used on
Hinge side of door

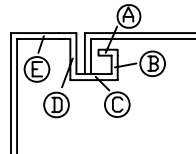
9 LIP



A	B	C	D	Gauge
5/8"	7/8"	1 3/8"	1 1/8"	16 ga
5/8"	7/8"	1 3/8"	1 1/8"	14 ga
5/8"	7/8"	1 3/8"	1 1/8"	12 ga
5/8"	1 1/8"	1 3/8"	1 1/4"	10 ga

Notes: Single lip door only, Hinge side req'd
Good weather stripping seal
Door lips 1 5/16" ID on three sides
and 3/4" ID on hinge side

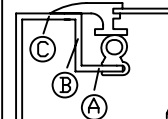
12 LIP



A	B	C	D	E	Gauge
5/8"	7/8"	2"	1 3/8"	1 1/8"	16 ga
5/8"	7/8"	2"	1 3/8"	1 1/8"	14 ga
5/8"	7/8"	2"	1 3/8"	1 1/8"	12 ga

Notes: Single lip door, better weather seal
Not available for 10 ga or thicker
Note this lip requires much more time
to bend (about double the #9 lip)

6 LIP (western extrusion)



A	B	C	Gauge
3/4"	1 3/8"	1 1/4"	16 ga
3/4"	1 3/8"	1 1/4"	14 ga
3/4"	1 3/8"	1 1/4"	12 ga
3/4"	1 3/8"	1 1/4"	10 ga

Notes: Superior weather seal
Door is flat sheet (No bending req'd)
Door material must be .100 thick max
weather strip fits on top of Lip "A"